



8 METRE WORLD CHAMPIONSHIP

29th June to 5th July 2015

Société Nautique de Genève (SNG)

In co-operation with the International Eight Metre Association (IEMA)

SAILING INSTRUCTIONS

1. RULES

- 1.1 The regatta will be governed by the rules as defined in the Racing Rules of Sailing (RRS).
- 1.2 The relevant Swiss Sailing prescriptions apply (<http://www.sailing.org/35777.php>).
- 1.3 Under RRS 87, Rules of the International 8 Metre class will be changed as follows:
Yachts designed prior to January 1 1960 with no hull modification as defined by IEMA are permitted a maximum measurement of 8.07 metres, using the rating formula of the Class Rule. Such yachts shall otherwise have valid measurement certificates. The owners shall submit a signed statement at registration that no hull modifications or ballast changes which would affect the rating have been made since the last measurement.
- 1.4 The maximum number of crew is increased to seven for all yachts designed prior to 1960. All yachts shall be required to declare their number of crew and the names at registration and shall sail with that number of crew throughout the regatta.
All yachts may register one alternative crew on their crew list and may use this crew by registering the change by 19.00 at the Regatta Office on the day before the crew change is to take place. Any additional changes shall be subject to approval by the International Jury.
- 1.5 All yachts must carry on board a towline of minimum 15 metre length and personal flotation devices for every crew member on board.
- 1.6 If there is a conflict between languages the English text will take precedence.

2. NOTICES TO COMPETITORS

Notices to competitors will be posted on the official notice board located near the SNG Regatta office.

3. CHANGES TO SAILING INSTRUCTIONS

Any change to the sailing instructions will be posted before 09:00 on the day it will take effect, except that any change to the schedule of races will be posted by 20:00 on the day before it will take effect.

4. SIGNALS MADE ASHORE

- 4.1 Signals made ashore will be displayed on the club flagpole with the "SNG" Flag
- 4.2 When flag AP is displayed ashore, '1 minute' is replaced with 'not less than 60 minutes' in the race signal AP. This changes Race Signals.
- 4.3 When flag Y is displayed ashore, rule 40 applies at all times while afloat. This changes the Part 4 preamble



EDMOND
DE ROTHSCHILD FRED



MUSTO



OROLOGI CALAMAI



5 SCHEDULE OF RACES

5.1 Dates of racing:

Thursday 25th to Sunday 28th June:	Registration & boat inspection
Friday 26th to Sunday 28th June	Tune up races: during the "Classique Rothschild" regatta at SNG, the 8 Metre class will have a separate start.
Monday June 29	Racing (Day 1)
Tuesday June 30	Racing (Day 2)
Wednesday July 1 st	Racing (Day 3)
Thursday July 2 nd	Racing (Day 4)
Friday July 3 rd	Racing (Day 5)
Saturday July 4 th	Racing (Day 6)

- 5.2** Number of races: A maximum of ten races will be sailed, with no more than two races scheduled for any day. One extra race per day may be sailed, on any day if considered necessary and the change is made according to instruction SI 3.
- 5.3** The scheduled time of the warning signal for the first race each day is 10:55.
- 5.4** To alert boats that a race or sequence of races will begin soon, the orange starting line flag will be displayed with one sound at least five minutes before a warning signal is made.
- 5.5** On the last day of the regatta no warning signal will be made after 15:00.

6 CLASS FLAGS

The class flag will be a white flag with the International 8 Metre class insignia.

7 RACING AREA

- 7.1** Attachment A shows the location of the racing area.
- 7.2** The Race Committee Boats will display the SNG pennant and/or a White Flag bearing the letter "C".
- 7.3** VHF channel is 88.

8 THE COURSES

- 8.1** The diagrams in Attachment B show the courses, including the approximate angles between legs, the order in which marks are to be passed, and the side on which each mark is to be left. The approximate course length will be 10 Nautical Miles but, at the discretion of the Race Officer, this may be altered to reflect the prevailing weather conditions.
- 8.2** No later than the warning signal, the race committee signal boat will display the approximate compass bearing of the first leg.

9 MARKS

- 9.1** Marks 1, 2, 3 S and 3 P, will be yellow tetrahedral buoys.
- 9.2** New marks, as provided in instruction 12.1, will be orange cylindrical buoys.

10 AREAS THAT ARE OBSTRUCTIONS

There are no obstructions in the racing area, except for: the water ski area north of SNG harbor and which is marked by yellow buoys (see Annex A). Competitors are reminded that there is a risk of danger close to the coast.





11 THE START



- 11.1 Races will be started by using rule 26 with the warning signal made 5 minutes before the starting signal.
- 11.2 The starting line will be between a staff displaying an orange flag on the signal vessel at the starboard end and an orange buoy at the port end.
- 11.3 A boat starting later than 10 minutes after her starting signal will be scored Did Not Start without a hearing. This changes rule A4.
- 11.4 If flag U has been displayed as the preparatory signal, no part of a boat's hull, crew, or equipment shall be in the triangle formed by the ends of the starting line and the first mark during the last minute before her starting signal. If a boat breaks this rule and is identified, she shall be disqualified without a hearing but not if the race is restarted or resailed or postponed or abandoned before the starting signal. This changes rule 26
- 11.5 If any part of a boat's hull, crew or equipment is on the course side of the starting line during the two minutes before her starting signal and she is identified, the race committee will attempt to broadcast her sail number on VHF channel 88. Failure to make a broadcast or to time it accurately will not be grounds for a request for redress. This changes rule 62.1(a).

12 CHANGE OF THE NEXT LEG OF THE COURSE

- 12.1 To change the next leg of the course, the race committee will lay a new mark or move the finishing line and remove the original mark as soon as practicable. When in a subsequent change a new mark is replaced, it will be replaced by an original mark.
- 12.2 Except at a gate, boats shall pass between the race committee boat signaling the change of the next leg and the nearby mark, leaving the mark to port and the race committee boat to starboard. This changes rule 28.

13 THE FINISH

- 13.1 **Courses 1 & 3 (Annex B):** the finishing line will be between a staff displaying a blue flag on the Race Committee vessel at the port end and an orange cylindrical buoy at the starboard end
- 13.2 **Courses 2 & 4 (Annex B):** the finishing line will be between a staff displaying a blue flag on the Race Committee vessel at the starboard end and Mark 1 at the port end.

14 PENALTY SYSTEM

- 14.1 Rule 44.1 is changed so that the Two-Turns Penalty is replaced by the One-Turn Penalty.
- 14.2 A boat that has taken a penalty or retired under RRS 44.1 shall complete an acknowledgement form at the race office within the protest time limit.

15 TIME LIMITS AND TARGET TIMES

- 15.1 The time limit will be 3 hours for each race. If no boat has passed the mark 1 within 1 hour the race will be abandoned. This changes RRS 62.1(a).
- 15.2 Boats failing to finish within 45 minutes after the first boat in their particular category sails the course and finishes or within the time limit, whichever is later, will be scored Did Not Finish without a hearing. This changes rules 35, A4 and A5.

16 PROTESTS AND REQUESTS FOR REDRESS

- 16.1 Protest forms are available at the race office. Protests and requests for redress or reopening shall be delivered there within the appropriate time limit.





- 16.2** The protest time limit is 60 minutes after the last boat has finished the last race of the day or the race committee signals no more racing today, whichever is later.
- 16.3** Notices will be posted no later than 30 minutes after the protest time limit to inform competitors of hearings in which they are parties or named as witnesses. Hearings will be held in the protest room, located at the SNG Club House, beginning at the time posted.
- 16.4** Notices of protests by the race committee or International Jury will be posted to inform boats under rule 61.1(b).
- 16.5** Breaches of instructions 14.2, 18, 21, 23, 24, 25, 26 and 27 will not be grounds for a protest by a boat. This changes rule 60.1(a). Penalties for these breaches may be less than disqualification if the International Jury so decides.
- 16.6** On the last scheduled day of racing a request for reopening a hearing shall be delivered
- (a) within the protest time limit if the requesting party was informed of the decision on the previous day;
 - (b) no later than 30 minutes after the requesting party was informed of the decision on that day. This changes rule 66.
- 16.7** On the last scheduled day of racing a request for redress based on a decision of the International Jury shall be delivered no later than 30 minutes after the decision was posted. This changes rule 62.2.
- 16.8** Decisions of the International Jury will be final as provided in rule 70.5.

17 SCORING

- 17.1** The scoring system is the low point system In Appendix A as modified in 17.2(a)
- 17.2** Five races are required to be completed to constitute a valid championship.
- (a) When fewer than 6 races have been completed, a boat's series score will be the total of her race scores.
 - (b) When from 6 to 10 races have been completed, a boat's series score will be the total of her race scores excluding her worst score.

18 SAFETY REGULATIONS

A boat that retires from a race shall notify the race committee as soon as possible.

19 REPLACEMENT OF CREW OR EQUIPMENT

- 19.1** Any crew changes, in addition to those registered, shall be subject to approval by the International Jury. A reason for the change must be given.
- 19.2** Substitution of damaged or lost equipment will not be allowed unless authorized by the race committee. Requests for substitution shall be made to the committee at the first reasonable opportunity.

20 EQUIPMENT AND MEASUREMENT CHECKS

A boat or equipment may be inspected at any time for compliance with the class rules and sailing instructions. On the water, a boat can be instructed by a race committee member to proceed immediately to a designated area for inspection.

21 EVENT ADVERTISING

Boats shall display event advertising that may be supplied by the organizing authority. In accordance with the Class Rules 36, no advertising is allowed on the main sail or genoa.



**EDMOND
DE ROTHSCHILD FRED**



MUSTO



OROLOGI CALAMAI



22 OFFICIAL BOATS

Official boats will be marked with “SNG” flags and/or white flags bearing the letter “C” or International Code Flag “J”.

23 SUPPORT BOATS

23.1 Team leaders, coaches and other support personnel shall stay outside areas where boats are racing from the time of the preparatory signal for the first class to start until all boats have finished or retired or the race committee signals a postponement, general recall or abandonment.

23.2 Support boats shall be marked with an assigned flag that shall be displayed throughout the regatta. This flag can be obtained from the Regatta Office during registration

24 TRASH DISPOSAL

RRS 55 is modified by adding the sentence : “However, discarding elastic or wool bands when setting a sail will not be considered a breach of rule 55”. The penalty for breaking rule 55 may be less than disqualification if the International Jury so decides.

25 HAUL-OUT RESTRICTIONS

Boats shall not be hauled out during the regatta except with and according to the terms of prior written permission of the International Jury.

26 DIVING EQUIPMENT AND PLASTIC POOLS

Underwater breathing apparatus and plastic pools or their equivalent shall not be used around boats between the preparatory signal of the first race and the end of the regatta.

27 RADIO COMMUNICATION

Except in an emergency, a boat shall neither make radio transmissions while racing nor receive radio communications not available to all boats. This restriction also applies to mobile telephones, etc.

28 PRIZES

Prizes will be given as described in the Notice of Race.

29 DISCLAIMER OF LIABILITY

Competitors participate in the regatta entirely at their own risk. See rule 4, Decision to Race. The organizing authority will not accept any liability for material damage or personal injury or death sustained in conjunction with or prior to, during, or after the regatta.

30 INSURANCE

Each participating boat shall be insured with valid third-party liability insurance with a minimum cover of € 2 000 000 or the equivalent.

31 RACE OFFICIAL TEAM

Principal Race Officer:	Pascal Monet	
International Jury:	Terence Brownrigg	IJ-GBR Chairman
	Tony O’Gorman	IJ-IRL



EDMOND
DE ROTHSCHILD FRED



MUSTO



OROLOGI CALAMAI



Mufti Kling
Tor Moinichen
Dominique Hausser

IJ-GER
IJ-NOR
NJ-SUI



EDMOND
DE ROTHSCHILD FRED



MUSTO



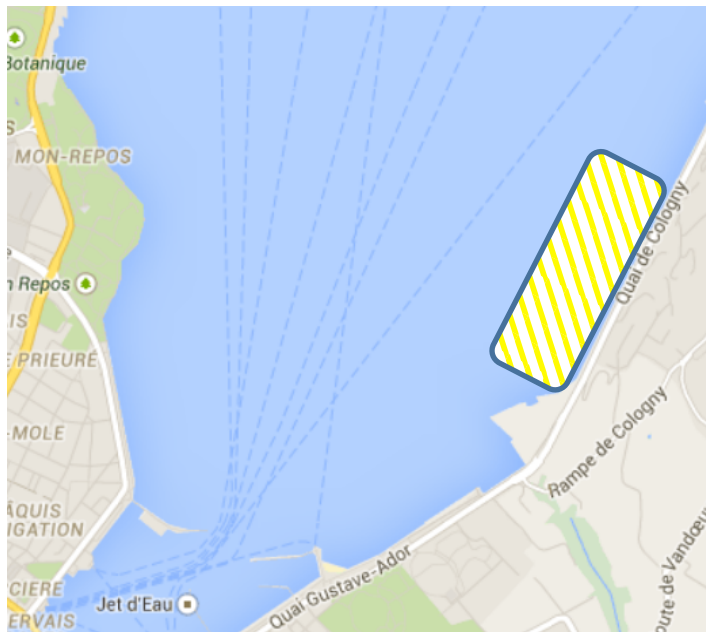
OROLOGI CALAMAI



Attachment A : RACING AREA



Obstruction



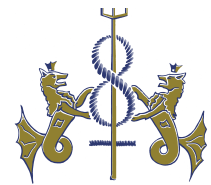
EDMOND
DE ROTHSCHILD FRED



MUSTO



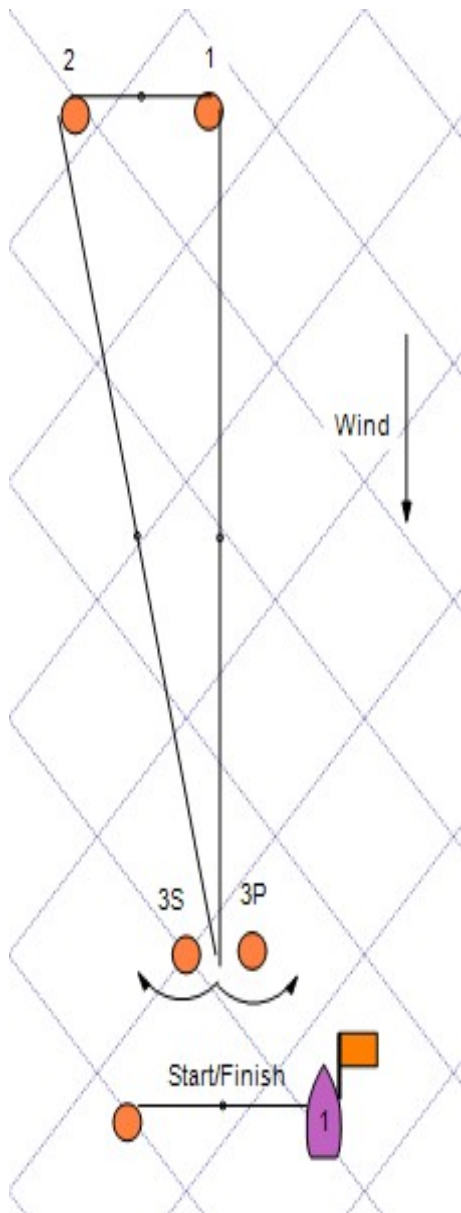
OROLOGI CALAMAI



Attachment B: COURSES

No later than the warning signal, the race Committee will display a numeral pennant to indicate the number of laps to be sailed.

Windward-Leeward Course



- **Mark 3 is a gate**
- **When a change of course is signaled at one mark of gate 3, only mark 1 will be re-laid (mark 2 will be removed and not re-laid).**
- **When a change of course is signaled at mark 1 or 2, gate 3 will be removed and replaced by one mark to be left on port.**

- **Course 1 (2 lap): Numeral Pennant 1**

Start-1-2-Gate3-1-2-Finish(downwind)

- **Course 2 (2.5 laps): Numeral Pennant 2**

Start-1-2-Gate3-1-2-Gate3-Finish(upwind) between Mark 1 and a Race Committee vessel

- **Course 3 (3 laps) : Numeral Pennant 3**

Start-1-2-Gate3-1-2-Gate3-1-2-Finish(downwind)

- **Course 4 (3.5laps) : Numeral Pennant 4**

Start-1-2-Gate3-1-2-Gate3-1-2- Gate3-Finish (upwind) between Mark 1 and a Race Committee vessel



EDMOND
DE ROTHSCHILD FRED



MUSTO



OROLOGI CALAMAI